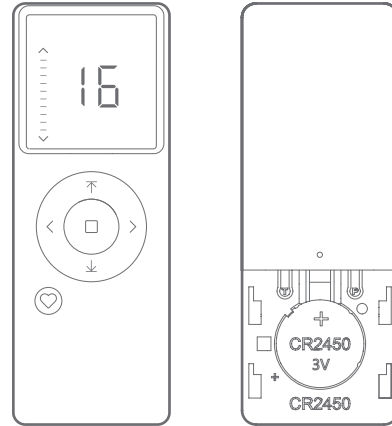
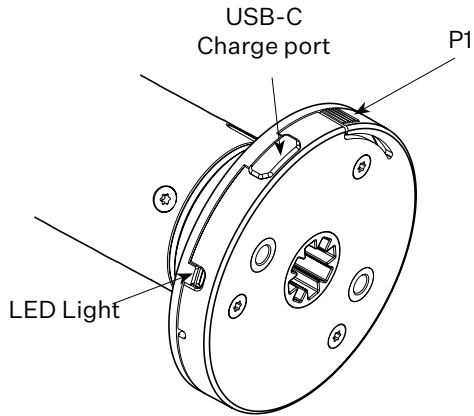




# HOW TO PAIR CONNECT 16 REMOTE WITH WHISPERTECH™ MOTORS

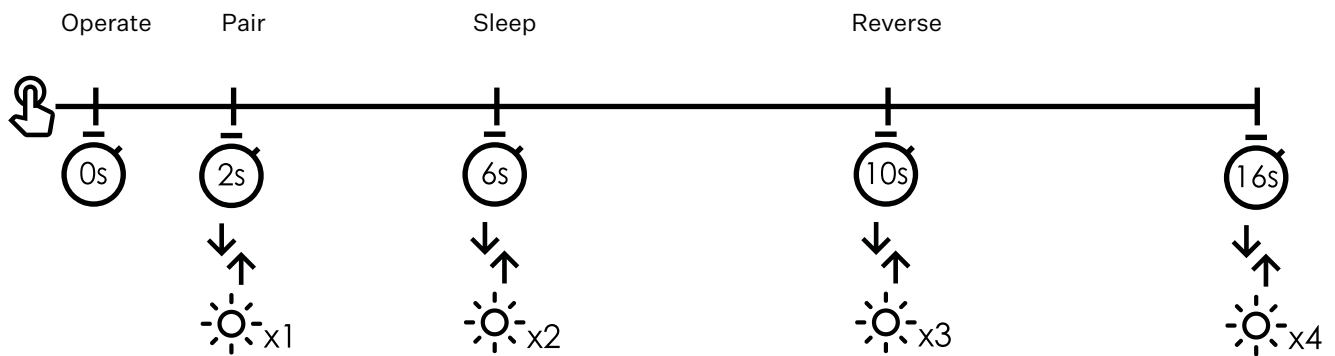
V043024

## WHISPERTECH P1 BUTTON



Connect 16 Remote

## P1 BUTTON FUNCTIONS



### OPERATE:

Operation function works only when motor limits are set and motor is not asleep. Press to alternate between up/stop/down actions.

### PAIR:

Activates motor pairing mode. Pairing should be complete within 10 seconds.

### SLEEP:

Putting motor to sleep deactivates all motor functions. Hold the P1 Button 2 seconds to wake up.

### REVERSE:

Reverses the direction of motor movement after limits have been set.

### RESET:

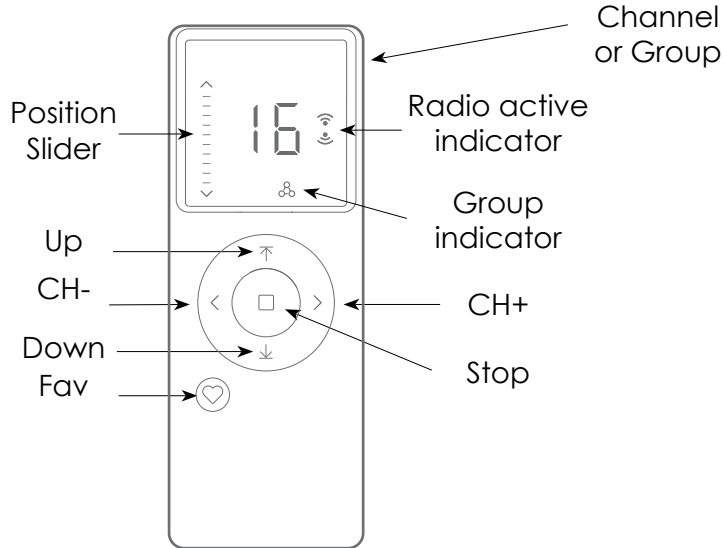
Fully resets the motor back to factory mode. Motor forgets all remotes and limits.



# HOW TO PAIR CONNECT 16 REMOTE WITH WHISPERTECH™ MOTORS

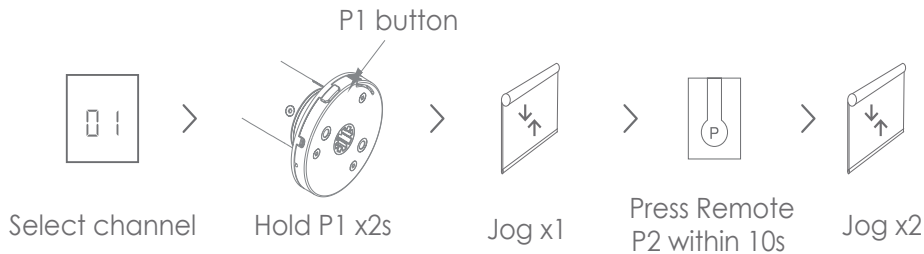
V043024

## CONNECT 16 REMOTE FEATURES



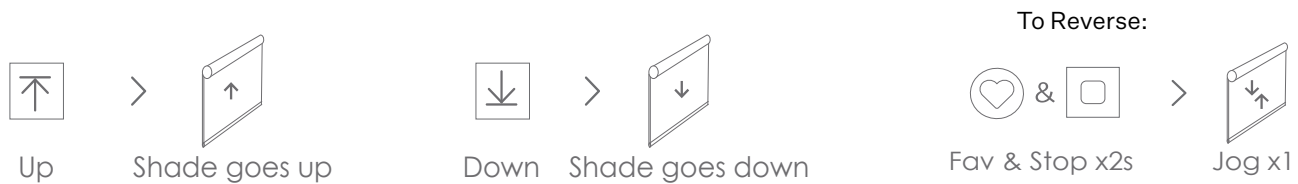
## PROGRAMMING AFTER FACTORY RESET

- 1 Select the desired channel on the desired remote
- 2 Hold P1 on the motor head for 2 seconds  
*Motor will flash 1x, jog 1x*
- 3 Press P on remote for 2 seconds  
*Motor will jog 2x*



## CHECK THE MOTOR DIRECTION

- 1 Press up or down to check the travel of the shade
- 2 To reverse direction, hold Fav & Stop for 2 seconds  
*Motor will jog 1x*





# HOW TO PAIR CONNECT 16 REMOTE WITH WHISPERTECH™ MOTORS

V043024

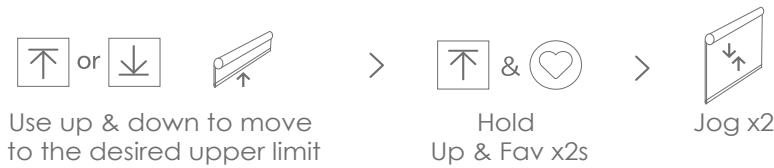
## SET SHADE LIMITS

---

**Note: Order of setting top or bottom limit first is not critical.**

### Top Limit:

- 1 Move the shade to desired top limit
- 2 Hold UP and FAV for 2 seconds  
*Motor will jog 2x*



### Bottom Limit:

- 1 Move the shade to desired bottom limit
- 2 Hold DOWN and FAV for 2 seconds  
*Motor will jog 2x*



*After setting limits, motor will automatically exit from initial set up mode.  
The shade should operate as expected now. UP should go to the top and DOWN should go to the bottom*

## ADJUSTING THE LIMITS

---

### Adjusting the Top Limit:

- 1 Hold UP and FAV for 6 seconds  
*Motor will jog 1x*
- 2 Move shade to the desired top limit
- 3 Hold UP and FAV for 2 seconds  
*Motor will jog 2x*





# HOW TO PAIR CONNECT 16 REMOTE WITH WHISPERTECH™ MOTORS

V043024

## ADJUSTING THE LIMITS CONTINUED

### Adjusting the Bottom Limit:

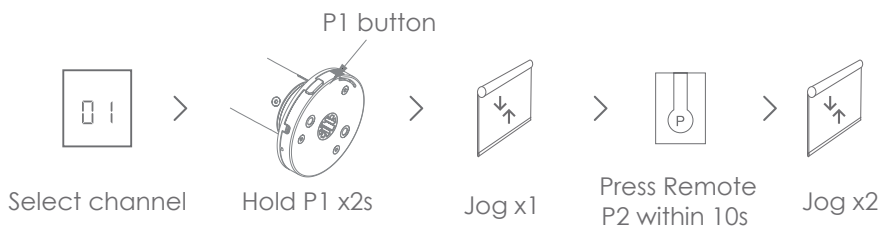
- 1** Hold DOWN and FAV for 6 seconds  
*Motor will jog 1x*
- 2** Move shade to the desired bottom limit
- 3** Hold DOWN and FAV for 2 seconds  
*Motor will jog 2x*



## ADD/REMOVE A NEW REMOTE/CHANNEL

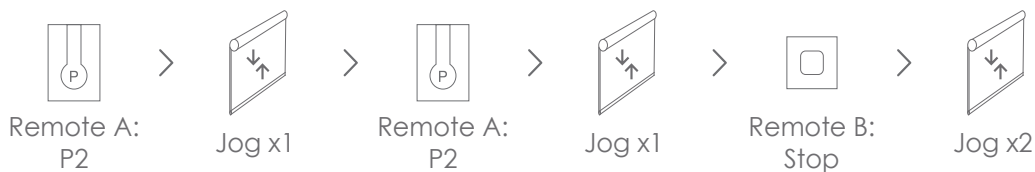
### Option A:

- 1** Hold the P1 button on motor head  
*Motor will jog 1x*
- 2** Hold the P2 on remote to add or remove  
*Motor will jog 2x*



### Option B (from existing remote/channel):

- 1** Select existing remote/channel then Press P2  
*Motor will jog 1x*
- 2** Press P2 on existing remote (again)  
*Motor will jog 1x*
- 3** Press P2 on new remote OR remote to remove  
*Motor will jog 2x*





# HOW TO PAIR CONNECT 16 REMOTE WITH WHISPERTECH™ MOTORS

## LOCK/DISABLE KEY FUNCTION

- 1 Hold P2 for 10 seconds to activate or deactivate remote lock



## POSITION SLIDER OPERATION

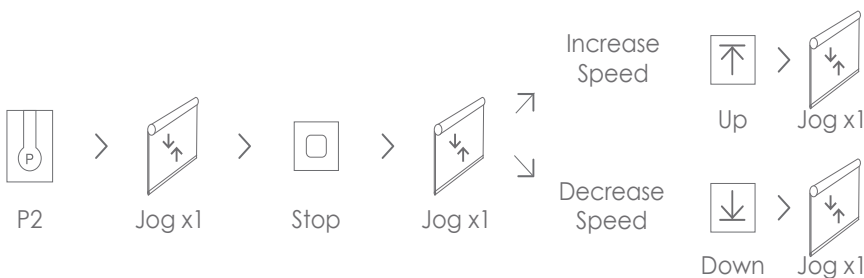
- 1 Select channel or group
- 2 Press stop 3x for slider bar to appear
- 3 Use arrows to move bar up/down



- 4 Stop at desired position, wait 3s for shades to begin moving to desired location

## ADJUSTING THE CRUISE SPEED

- 1 Press P2 on the remote  
*Motor will jog 1x*
  - 2 Press stop on the remote  
*Motor will jog 1x*
  - 3 To increase speed:  
Press UP  
*Motor will jog 1x*
  - 4 To decrease speed  
Press DOWN  
*Motor will jog 1x*
- Note: If motor doesn't jog, the max/min speed has already been reached. There are 3 levels.*






# HOW TO PAIR CONNECT 16 REMOTE WITH WHISPERTECH™ MOTORS

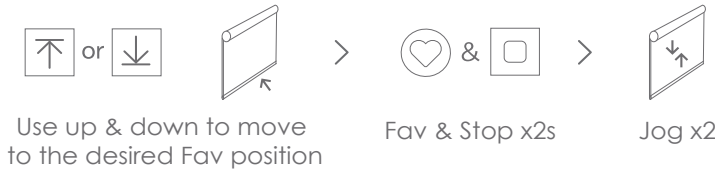
## INTERMEDIATE (FAV) POSITION

---

To go to the intermediate position, press Fav  on the remote

### Add:

- 1 Move the shade to desired Fav position
- 2 Hold Fav & Stop for 2s  
*Motor will jog 2x*



### Remove:

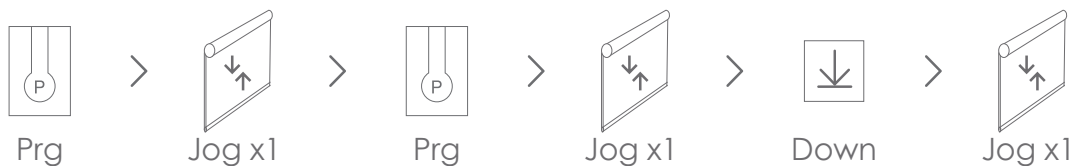
- 1 Move the shade to current Fav position
- 2 Hold Fav & Stop for 2s  
*Motor will jog 2x*



## REMOVE ALL CONTROLLERS

---

- 1 Select any remote/channel that is paired to the motor
  - 2 Press P2  
*Motor will jog 1x*
  - 3 Press P2 (again)  
*Motor will jog 1x*
  - 4 Press Down  
*Motor will jog 1x*
- Note: Motor will retain limits. A new remote must be paired via Add/Remove - Option A*





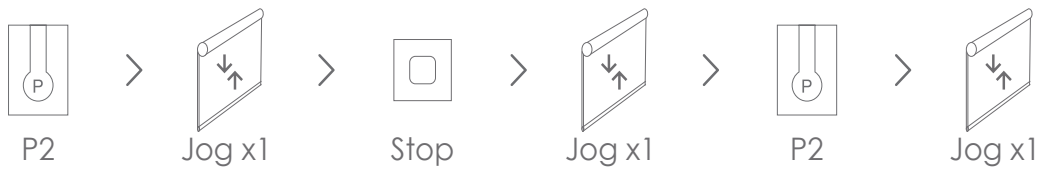
# HOW TO PAIR CONNECT 16 REMOTE WITH WHISPERTECH™ MOTORS

## DELETING LIMITS

---

- 1 Select any remote/channel that is paired to the motor
- 2 Press P2  
*Motor will jog 1x*
- 3 Press Stop  
*Motor will jog 1x*

- 4 Press P2  
*Motor will jog 1x*
- Note: Motor will retain paired remotes/channels*

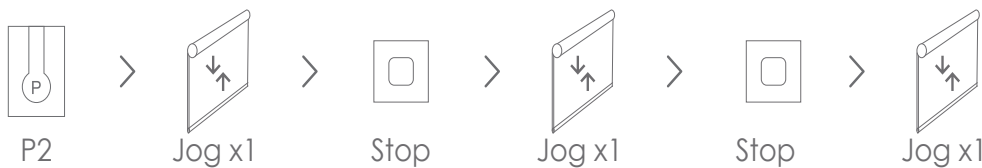


## TOUCH TO MOVE MODE

---

- 1 Select any remote/channel that is paired to the motor
- 2 Press P2  
*Motor will jog 1x*
- 3 Press Stop  
*Motor will jog 1x*

- 4 Press Stop  
*Motor will jog 1x*
- Note: Touch-to-move operation moves the shade one jog per button press (like before limits are set). Hold 2s to move like normal operation.*

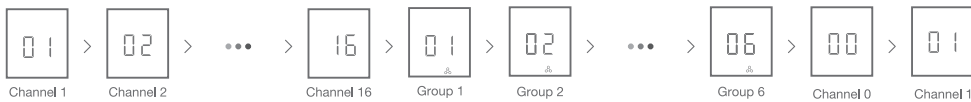




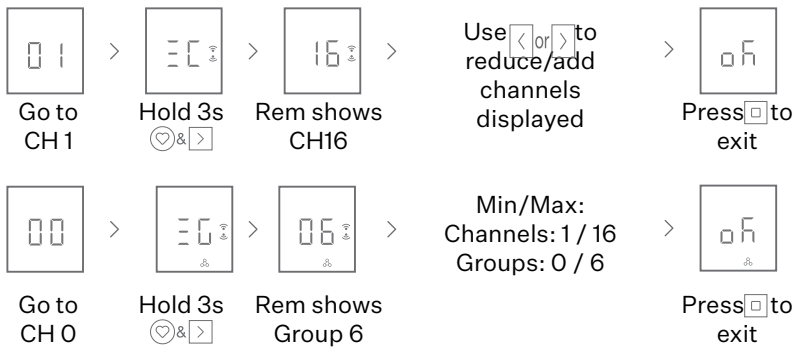
# CONNECT 16 REMOTE WITH WHISPERTECH™ MOTORS

## CHANGING CHANNELS

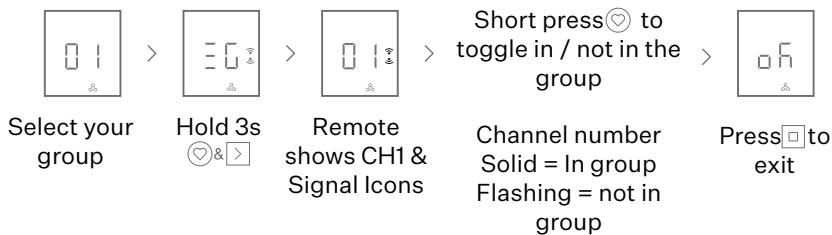
 or  To toggle  
Short Press



## HIDE CHANNELS & GROUPS



## ADD/REMOVE CHANNELS FROM GROUP



## VIEW CHANNELS IN GROUP

